



MTV

Product Information Sheet

Standard Specification

Dimensions

Width/Depth/ (mm)	1145 / 1145
Height	see product range
Inlet diameter (mm)	350
Outlet diameter (mm)	50
Tare weight (kg)	See product range
Nominal capacity (L)	See product range

Composition

Frame	Galvanised steel
Liner	LMDPE ²
Closure	PP ¹
Closure gasket	EPDM ³

Options

Clamp band lid, Arag lid
Various vents
Coloured liner, graphics on liner
Anti-tilts in frame, fork tunnels, castors
Graphics on liner

1 – Polypropylene
2 – Linear Medium Density Polyethylene
3 – Ethylene Propylene Diene Monomer (rubber compound)

General Description

The MTV is a reusable IBC designed for the transportation and storage of viscous liquids.

The MTV liner is rotationally moulded in natural UV stabilised linear medium density polyethylene. The polymer has strong resistance to industrial wear and tear. The liner is supported and protected by a weather proof galvanised mild steel frame. The MTV is interstackable for loading and space saving and has integral four way fork truck entry with anti-tilts to improve handling efficiency.

The liner inlet which is 350mm in diameter has a PP¹ screw cap fitted with a food approved O-ring seal as standard. The standard outlet is a 50mm single union UPVC⁴ ball valve fitted with EPDM³ seals. It is attached to the liner via a fusion welded 50mm BSP male threaded socket.

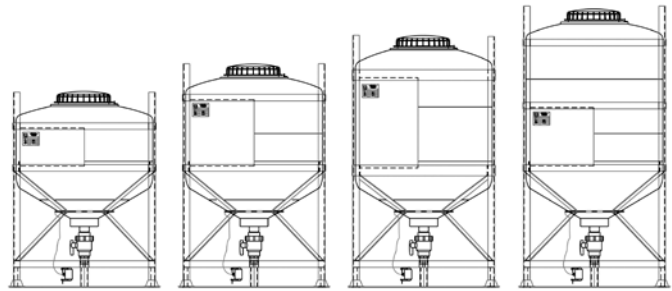


A reusable IBC for the transportation and storage of liquids

Model shown is an MTV 1000 with fork tunnels fitted with a standard screw cap and ball valve



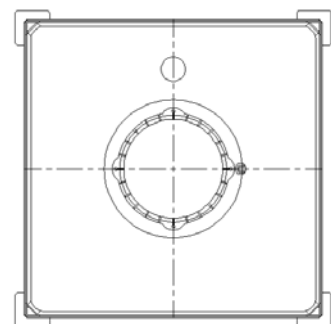
MTV Product Range



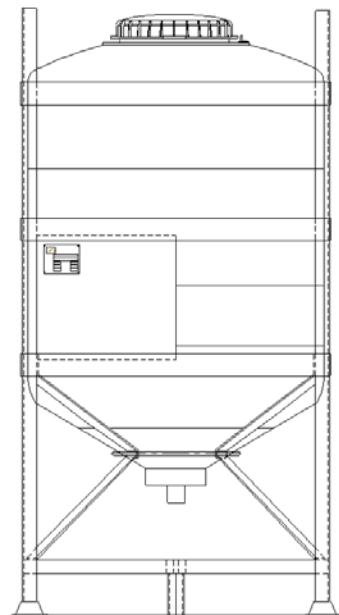
TYPE	600	800	1000	1200
Capacity - L	600 L	800 L	1000L	1200L
Height - mm	1470	1685	1890	2120
Tare Weight - kg	136	139	147	167



MTV 1000 fitted with fork tunnels



MTV Plan view



MTV Front elevation

Whilst every attempt has been made to ensure that the information provided in this product information sheet is accurate and reliable Francis Ward cannot accept responsibility for the interpretation of the information provided. It is the responsibility of the user to determine the chemical compatibility of the container with its intended contents.



Francis Ward – A Division of The Rotational Mouldings Group

Brook House, 221 Bowling Back Lane, Bradford, BD4 8SJ, UK

Tel: +44 (0)1274 707030 | Fax: +44 (0)1274 724704 | Email: sales@francisward.com | Web: www.francisward.com